



迈展科技

Focused Wireless Charging

Shenzhen Maizhan Technology Co., Ltd

Product Catalog

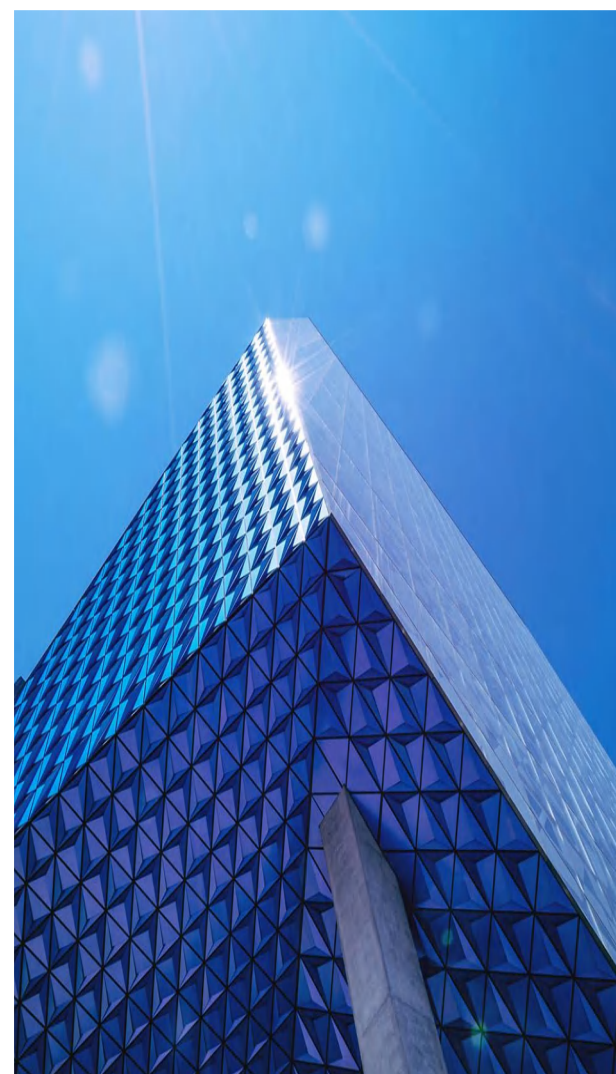
Contact: Robin

Phone: +86 173 0445 8527

Skype: 173 0445 8527

E-mail: robin@alitermz.com

Website: www.alitermz.com



Shenzhen Maizhan Technology Co., Ltd. is a research and development, production, sales in one of the wholly-owned enterprises, founded in 2015, there is a production base in Shenzhen, covering an area of 1500 square meters.

We are specializing in the wireless charger and smart phone peripheral accessories.

The company has been committed to the application and innovation of mobile phone peripheral products such as wireless chargers, focusing on customer communication and cooperation and providing the most personalized products for the global market.

Since every customer would have different requirement, our professional sales team will always listen to you fully and do our best to offer the available solution of complete of production combination to suit with the local markets requirements.

Our major clients are chains stores/supermarket/importers/promotion customers/branding customers. We have won great reputations from customers by providing high quality products at competitive prices, strict quality control and fast lead time in the global marketplace.

We have good engineering product design, in-house artwork designer team and good insight of the trend of consumer electronics. Our mold toolings are designed by ourselves. This guarantees the uniqueness of our products.

All products meet the RoHS requirement and were certified by Qi, CE, FCC, UL, SAA, BS, PSE, etc.

We look forward to working with you from the world to develop long-term mutually beneficial and win-win partnership at your end markets!



WIRELESS CHARGER CONTENTS

1. Foldable Wireless Charger

1.1 F22-----	01
1.2 F20P-----	02
1.3 F20S-----	03

2. Desktop wireless charger

2.1 F17-----	01
2.2 F16-----	02
2.3 F15-----	03
2.4 F11Pro-----	04
2.5 F11-----	05

3. Car wireless charger

3.1-EP08G-----	01
3.2 EP08-----	02
3.3 EP05F-----	03
3.4 EP02F-----	04
3.5 EP01F-----	05

4. Wireless charger pencil box

4.1 P2-----	01
4.2 P1-----	02

5. Customize wireless charger

5.1 MZ-HY001-----	01
5.2 MZ-X455-----	02
5.3 MZ-HY020-----	03
5.4 MZ-J864-----	04
5.5 MZ-H011-----	05
5.6 MZ-X366-----	06



4-in-1 Foldable Wireless Charger Dock Model: F22



Function: wireless charging

Input: 12V/2A ; 9V/ 2A;5V/3A

Output : Qi Phone:15w/ 10w/7.5w/5w; Apple watch:3w;

TWS:5w/3w ;Apple pencil:1w

Efficiency: over73%

Charging port: Type-c

Charging distance: $\leq 4\text{mm}$

Material: PC+ABS +Metal

Color: Black/white

Certification: Qi,CE,RoHS,FCC,PSE,METI

Packaging:

Product size: open 131.5*110.5*40mm

Package size:153*134*47mm

Product weight: 186g

Carton size: 475*398*286mm

QTY/CTN: 50PCS

G.W.: 16.5KG

3-in-1 Foldable Wireless Charger

Model: F20P

Function: wireless charging

Input: 12V/2A ; 9V/ 2A;5V/3A

Output : Qi Phone:15w/ 10w/7.5w/5w; Apple watch:3w; TWS:5W/3W

Efficiency: over73%

Charging port: Type-c

Charging distance: $\leq 4\text{mm}$

Material: PC+ABS

Color: Black/white

Certification: Qi,CE,RoHS,FCC,PSE,METI

Packaging:

Product size: open 182*115*10mm fold:88.5*115*24.5mm

Package size:187*155*137mm

Product weight: 1 8 6 g

Carton size: 398*290*288mm

QTY/CTN: 50PCS

G.W.: 9.7KG

Magnetic Folding 3-in-1 Wireless Charger

For iPhone 8 and above+Apple Watch Series+AirPods 2 and above



Works with built-in magnetic module



Works with built-in magnetic module



GET PORTABLE APPLE DEVICES 100% CHARGED



APPLE DEVICES ORGANIZED

- * Classic Collection
- * Easily Take or Put



3-in-1 Foldable Wireless Charger

Model: F20S

Function: wireless charging

Input: 12V/2A ; 9V/ 2A;5V/3A

Output : Qi Phone:15w/ 10w/7.5w/5w; Apple watch:3w; TWS:5W/3W

Efficiency: over73%

Charging port: Type-c

Charging distance: $\leq 4\text{mm}$

Material: PC+ABS

Color: Black/white

Certification: Qi,CE,RoHS,FCC,PSE,METI

Packaging:

Product size: open 178*116*10.5mm fold:86*116*21mm

Package size:187*155*137mm

Product weight: 186g

Carton size: 398*290*288mm

QTY/CTN: 50PCS

G.W.: 9.7KG

Magnetic Folding 3-in-1 Wireless Charger

For iPhone 8 and above+Apple Watch Series+AirPods 2/Pro/3



Works with built-in magnetic module

Magnetic Folding 3-in-1 Wireless Charger

For iPhone 8 and above+Apple Watch Series+AirPods 2/Pro/3



Works with built-in magnetic module

GET PORTABLE APPLE DEVICES 100% CHARGED



APPLE DEVICES ORGANIZED
* Classic Collection
* Easily Take or Put



3-in-1 Wireless Charger Dock for Samsung Model: F17

Function: wireless charging

Input: 12V/2A ; 9V/ 2A;5V/3A

Output : 7.5W for:iPhone14 series, iPhone13 series,iPhone12 series,iPhone11series,iPhone8
iPhone8 plus,iPhone X,iPhone XS,XR,XS Max

15W/10W for:Sumsung Note20/10,S22,S10,S10+,Note9,S23,S22,S21,S10,S9,S9+,Note8,Galaxy
S8,S8+,Galaxy S7,Galaxy S7 edge,Galaxy S6 edge+,Galaxy Note 5,Note FE

3W: Galaxy Buds,Galaxy Buds+, Galaxy Buds 2

Efficiency: over73%

Charging port: Type-c

Charging distance: $\leq 4\text{mm}$

Material: PC+ABS

Color: Black

Certification: CE,RoHS,FCC

Packaging:

Product size: 150*105*125mm

Package size:187*155*137mm

Product weight: 330 g

Carton size: 585*380*485mm

QTY/CTN: 48PCS

G.W.: 16.8KG



5-in-1 Apple Wireless Charger Dock

Model: F16

Function: wireless charging

Input: 12V/2A ; 9V/ 2A;5V/3A

Output : Qi Phone:15w/ 10w/7.5w/5w; Apple watch:3w; TWS:5W/3W

Efficiency: over73%

Charging port: Type-c

Charging distance: $\leq 4\text{mm}$

Material: PC+ABS

Color: Black

Certification: Qi,CE,RoHS,FCC,PSE,METI

Packaging:

Product size: 150*105*125mm

Package size:187*155*137mm

Product weight: 330g

Carton size: 585*380*485mm

QTY/CTN: 48PCS

G.W.: 19.6KG

Wireless Charging Station 5IN1
Qi Phone+Galaxy/Watch+AirPod 2/3/Pro/Pro2/Buds



Case-Friendly



3-in-1 Apple Wireless Charger Dock

Model: F15

Function: wireless charging

Input: 12V/2A ; 9V/ 2A;5V/3A USB:5V/1A

Output : Qi Phone:15w/ 10w/7.5w/5w; Apple watch:3w

Efficiency: over73%

Charging port: Type-c

Charging distance: $\leq 4\text{mm}$

Material: PC+ABS

Color: Black

Certification: Qi,CE,RoHS,FCC,UL,PSE

Packaging:

Product size: 150*105*125mm

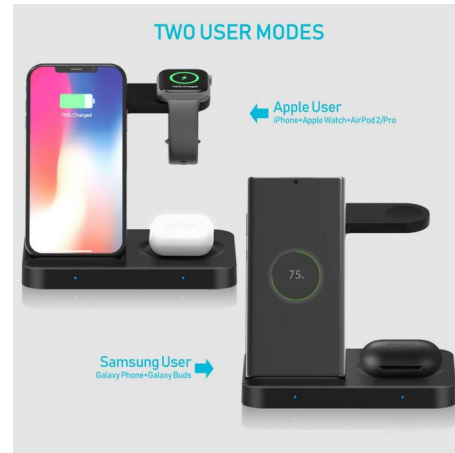
Package size:187*155*137mm

Product weight: 338g

Carton size: 585*380*485mm

QTY/CTN: 48PCS

G.W.: 19.6KG



Case-Friendly

$\leq 4\text{mm}$



ATTN: Remove magnetic or metal attachments that interfere with wireless charging.



3-in-1 Wireless Charging Dock

Model: F11 pro

Function: wireless charging

Input: 12V/2A ; 9V/ 2A;5V/3A

Output : Qi Phone:15w/ 10w/7.5w/5w; Apple watch:3w

Efficiency: over75%

Charging port: Type-c

Charging distance: $\leq 4\text{mm}$

Material: PC+ABS

Color: Black

Certification: Qi,CE,RoHS,FCC,UL,PSE

Packaging:

Product size: 140*121*105MM

Package size:145*125*135MM

Product weight: 267g

Carton size: 520*420*315mm

QTY/CTN: 48PCS

G.W.: 16.6KG



2-in-1 Wireless Charger Dock

Model: F11

Function: wireless charging

Input: 12V/2A ; 9V/ 2A;5V/3A

Output : Qi Phone:15w/ 10w/7.5w/5w; Apple watch:3w

Efficiency: over75%

Charging port: Micro USB5pin port

Charging distance: $\leq 4\text{mm}$

Material: PC+ABS

Color: Black

Certification: Qi,CE,RoHS,FCC,UL,PSE

Packaging:

Product size: 140*121*105MM

Package size:145*125*135MM

Product weight: 267g

Carton size: 520*420*315CM

QTY/CTN: 48PCS

G.W.: 19.6KG



Horizontal or Vertical
Charge Your Phone in Either Portrait or Landscape Position



The transition of the led

When iPhone X 8 or 8 plus is wireless charging,The led is blue.
When the charge is completed,The led also is blue.



When only Apple Watch is wireless charging,The led is not bright

When Samsung S9/S7/S6,Note8/S5 is wireless charging,The led is blue.
When the charge is completed,The led turn Green.



Wireless Charger Mat

Model: F10

Function: smart phone wireless charger mat

Input: 9V/1.67A ; 5V/ 2A

Out put power: 10W/7.5W/ 5W

Efficiency:over 75%

Charging port: Micro USB5pin port

Charging distance: $\leq 8\text{mm}$

Material: PC+ABS

Color: black

Certification: Qi,CE, RoHS, FCC

Packaging:

Product size: 97*97*8.5MM

Package size:150*115*30MM

Product weight: 82g

Carton size: 50*40*40CM

QTY/CTN: 130PCS

G.W.: 20.8KG



Product Appearance

Detail makes perfect



PU Leather Wireless Charger Round Pad Model: MZ-WP12



Material: PU Leather

Input: DC5V/2A; 9V/2A

Output: DC5V/ 1A; 9V/ 1.2A

Mobile phone output: 5W/7.5W/ 10W/ 15W (max)

Transmission distance: ≤ 6 MM

Charging efficiency: $\geq 76\%$

Colour: Black, Gray, Brown or custom

Packaging:

Product size: 100*6MM

Package size: 120*120*18MM

Product weight: 125g

Carton size: 38*36*27.5CM

QTY/Carton: 120pcs

G.W.: 16kg

Car Wireless Charger

Magnetic Wireless Car Charger

Model: EP08G



Function: wireless charging

Input: 9V/3A ; 9V/ 2A;5V/3A

Output : Qi Phone:15w/ 10w/7.5w/5w;

Efficiency: over73%

Charging port: Type-c

Charging distance: $\leq 4\text{mm}$

Material: PC+ABS

Color: Black

Certification: CE,RoHS,FCC,UL

Packaging:

Product size: open 104*63*86mm

Package size:140*70*65mm

Product weight: 155g

Carton size: 370*345*296mm

QTY/CTN: 50PCS

G.W.: 8.8KG



Car Wireless Charger

Magnetic Wireless Car Charger

Model: EP08

Function: wireless charging

Input: 9V/3A ; 9V/ 2A;5V/3A

Output : Qi Phone:15w/ 10w/7.5w/5w;

Efficiency: over73%

Charging port: Type-c

Charging distance: ≤ 4mm

Material: PC+ABS +Metal

Color: Black

Certification: Qi,CE,RoHS,FCC, ICES, UL

Packaging:

Product size: open 104*63*86mm

Package size: 140*70*65mm

Product weight: 155g

Carton size: 475*398*286mm

QTY/CTN: 50PCS

G.W.: 8.2KG

Magnetic Car Fast Wireless Charger



Powerful magnet keeps your new phone safely in place while driving



Car Wireless Charger

Automatic Clamping Smart Sensor Car Wireless Charger

Model: EP05

Function: wireless charging

Input: 9V/1.67 or 5V/2A

Output : 10w/7.5w/5w;

Efficiency: over73%

Charging port: Type-c

Charging distance: $\leq 8\text{mm}$

Material: Plastic+ silicone

Color: Black

Certification: CE,RoHS,FCC

Packaging:

Product size: 75*118*55mm

Package size: 115*140*96mm

Product weight: 358g

Carton size: 500*400*400mm

QTY/CTN: 75PCS

G.W.: 27KG



Car Wireless Charger

Automatic Clamping Smart Sensor Car Wireless Charger

Model: EP02F

TWO MODELS

1. Fast Charge Model(Output 9V/1.2A, 10.8W max) for Galaxy S8, S8+, S7, S7 edge, S6 edge plus and Note5
2. Standard Charge Model(Output 5V/1A, 5W max) for Standard Qi enabled device like S6, S6 edge ect.

FAST CHARGE
10.8W



Fast Car Charger
• Model: CC02
INPUT: DC 12-24V
OUTPUT: 9.0V-1.67A
5.0V-2.1A



Function: wireless charging

Input: 9V/1.67 or 5V/2A

Output : 10.8w/5w;

Efficiency: over75%

Charging port: Type-c

Charging distance: ≤ 8mm

Material: Plastic

Color: Black

Certification: CE,RoHS,FCC

Packaging:

Product size: 115*70*137mm

Package size:91*83*112mm

Product weight: 189g

Carton size: 500*400*400mm

QTY/CTN: 50PCS

G.W.: 9.6KG

Automatic Clamping Smart Sensor Car Wireless Charger Model: EP01F

FAST CHARGE

10.8W



TWO MODELS

1. Fast Charge Model Output 9V/1.2A, 10.8W max for Galaxy S8, S8+, S10, S10+ edge, S8 edge plus and Note8.
2. Standard Charge Model Output 5V/1A, 5W max for Standard Qi enabled device like S6, S6 edge ect.



Fast Car Charger
• Model: CC02
INPUT: DC 12-24V
OUTPUT: 9.0V-1.67A
5.0V-2.1A



Function: wireless charging

Input: 9V/1.67 or 5V/2A

Output : 10.8w/5w;

Efficiency: over75%

Charging port: Type-c

Charging distance: ≤ 8mm

Material: Plastic

Color: Black

Certification: CE,RoHS,FCC

Packaging:

Product size: 75*155*55mm

Package size:98*175*74mm

Product weight: 269g

Carton size: 300*265*280mm

QTY/CTN: 50PCS

G.W.: 13.5KG

Car Wireless Charger

Automatic Clamping Smart Sensor Car Wireless Charger

Model: MZ-X345



Material: Plastic + PCB

Feature: Infrared automatic sensing opens and locks, and touch to open.

Input: 9V-2A/ 12V- 1.5A

Power : 5W/7.5W/ 10W/ 15W

Output Port : USB- C

Transmission distance: ≤ 6 mm

Charging efficiency: ≥ 73 %

Color: Black

Packaging:

Product size: 119*69*18MM

Package size: 136*108*89MM

Product weight: 358g

Carton size: 42*33.5*36.5CM

QTY/Carton: 36pcs

G.W.: 14kg

Car Wireless Charger

Automatic Clamping Smart Sensor Car Wireless Charger

Model: MZ-V8

Material: Aluminum alloy + PCB

Features:

- 1) 15W Compatible with 10w / 7.5w / 5w.
- 2) Air outlet bracket; All metal shell, mirror design
- 3) The infrared automatic sensing opens and locks, the left side and lower part touch open.

Built in super capacitor, which can be opened after flameout

Input: 5V/3A, 9V/2A, 12V/ 1.5A

Power : 5W/7.5W/ 10W/ 15W

Output Port : USB-C

Transmission distance: ≤ 6 mm

Charging efficiency: $\geq 73\%$

Color: White/Black

Packaging:

Product size: 102*99*93MM

Package size: 197*107*52MM

Product weight: 260g

Carton size: 56*45*32CM

QTY/Carton: 48pcs

G.W.: 13.5kg



Wireless Charger Pencil Box

2 in1 Wireless Charging Pencil-Box Battery Model: P2

Material: PC+ABS

Compatible: Apple pencil 1st Gen and 2nd Gen.

Input: 5V/1A

Power : Apple Pencil 1: 1W; Apple Pencil 2: 1.5W

Output Port : Type-C

Charging efficiency: $\geq 73\%$

Battery capacity: 570mAh/3.85Vdc/2.194Wh

Color: White/Black

Packaging:

Product size: 204*36*21mm

Package size: 222*53*26mm

Product weight: 115g

Carton size: 450*260*270mm

QTY/Carton: 100pcs

G.W.: 12kg



Wireless Charger Pencil Box

2 in1 Wireless Charging Pencil-Box Battery Model: P1

Material: PC+ABS

Compatible: Apple pencil 1st Gen and 2nd Gen.

Input: 5V/1A

Power : Apple Pencil 1: 1W; Apple Pencil 2: 1.5W

Output Port : Type-C

Charging efficiency: $\geq 73\%$

Color: White/Black

Packaging:

Product size: 204*36*21mm

Package size: 222*53*26mm

Product weight: 104g

Carton size: 450*260*270mm

QTY/Carton: 100pcs

G.W.: 10.6kg



Other customized wireless charger

Magnetic with Holder Wireless Charger

Model: MZ-HY001

Input: 9V/2A;12/2A

Output: 5W/7.5W/ 10W/ 15W(MAX)

Color: Black/ White

Charging distance: 4 - 8 mm

Efficiency: $\geq 73\%$

Packaging:

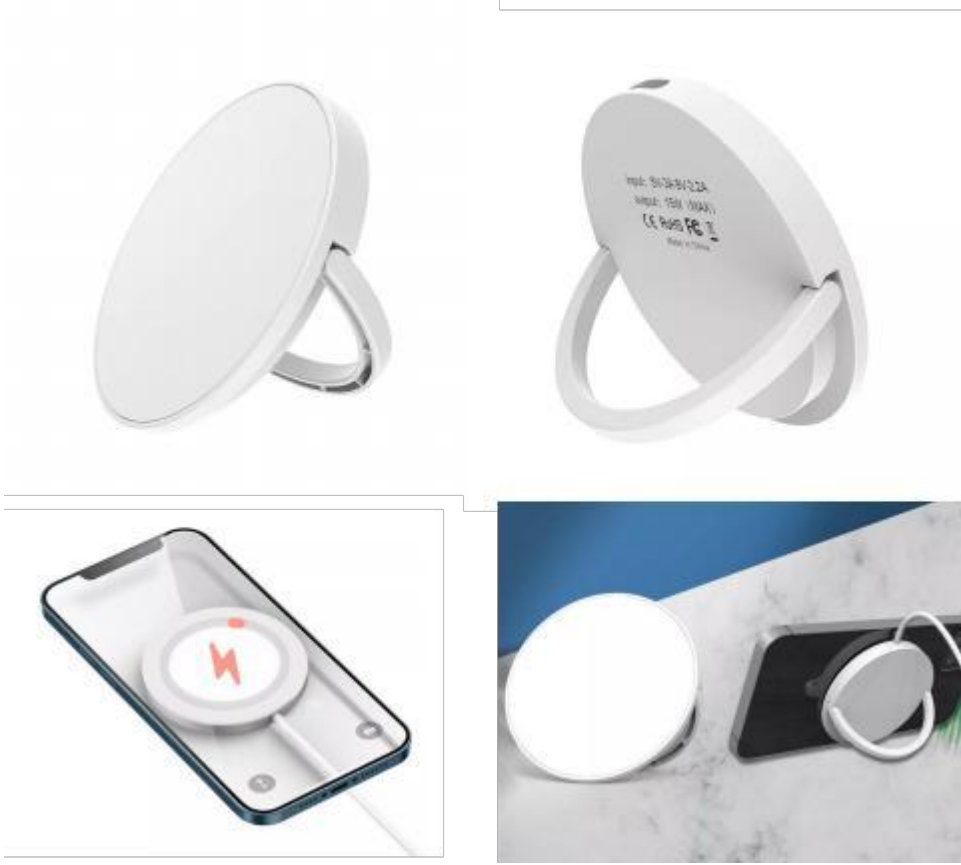
Product size: $\phi 64 * 7.2 \text{MM}$

Product weight: 60 g

Carton size: 54*28*23.3CM

QTY/CTN: 100pcs

G.W.: 9KG



Other customized wireless charger

3in1 Floding Wireless Charger

Model: MZ-X455



Function: Support mobilephone/ Applewatch/ Bluetooth headset wireless charging

Input: $\geq 9V/4A$, $12V/2.5A$

Output: 15 W/ 10 W/ 7.5 W/ 5 W (mobile phone)

Output: 3 W (iWatch)

Output: 2 W (TWS Bluetooth headset) · Adaptor: $\geq 9 V/ 4 A$

Compatibility: Support Qi compatible devices

Product Material : PCB+ ABS+ Acrylic

Product Color: Black/ White

Packaging:

Product size: 165*141.3*13MM

Package size: 186*50*165MM

Product weight: 172.5g

Carton size: 39*23*37CM

QTY/Carton: 40pcs

G.W.: 11.5kg

Other customized wireless charger

3 in 1 Folding Portable Wireless Charger Model: MZ-HY020



Input : 9V/2A 12/2A
Wireless Output 15W/ 10W/7.5W/5W
Charging distance 4-8mm
Material ABS
Airpod output 3W
Apple watch output 2.5W
USB Output 5V/ 0.8- 1A
Color : Black/White
Accessories: Type C cable (1 meter)
Custom color box package with inner card tray

Packaging:
Product size: 26 * 82 * 81MM
Package size: 140 * 110 * 35MM
Product weight: 163g
Carton size: 89 * 30 * 24CM
QTY/Carton: 100pcs
G.W.:17.8kg

Other customized wireless charger

6 in 1 Wireless Charging Dock

Model: MZ-J864



Input Current: $\geq 9V-2A$; $5V-3A$

Output: 5W/7.5W/ 10W/ 15W(MAX)

Material: PCB+ ABS+ PPMirror surface+ aluminium alloy+ Silicone

Frequency: 110-205KHz

Charging Distance: 3-6mm Charging

Efficiency: 78%

Color: black/white



Packaging:

Product size: 112*69MM

Package size: 123*82*49MM

Product weight: 248g (Double chargers: 263g)

Carton size: 41.5*27*23CM

QTY/Carton: 40pcs

G.W.: 12.3kg

3 in 1 Alarm clock wireless charger

Model: MZ-H011



Material: ABS +PBC

Input voltage: QC3.0 30 W or more

Phone output: 5 W/7.5 W/ 10 W15 W (max)

AirPods output: 3 W

iWatch output : 2.5W

Display screen

Transmission distance: ≤ 6 MM

Charging efficiency: $\geq 78\%$.

Color: black, white

Packaging:

Product size: 156*40*120MM

Package size: 160*90*60MM

Product weight: 300g

Carton size: 56*45*32CM

QTY/Carton: 40pcs

G.W.: 14.6kg



Other customized wireless charger

Automatic Clamping Smart Sensor Car Wireless Charger

Model: MZ-X366

Material: Plastic + PCB

Feature: The infrared automatic sensing opens the lock and the right touch opens it.

Input: 9V-2A/ 12V- 1.5A

Power : 5W/7.5W/ 10W/15W

Output Port: Type- C

Transmission distance: ≤ 6 mm

Charging efficiency: ≥ 73 %

Color: Black

Packaging:

Product size: 113.5*65*16.5MM

Package size: 181*100*139MM

Product weight: 370g

Carton size: 56*41*43CM

QTY/ Carton: 36pcs

G.W.: 14.5kg



Qi Magnetic Wireless Car Charger Model: MZ-HSX6

Material: Aluminum alloy + Acrylic + PCB+Magnetic

Features: magnetic wireless charger

Input: 5V/3A, 9V/2A, 12V/ 1.5A

Power : 5W/7.5W/ 10W/ 15W

Output Port : USB

Transmission distance: ≤ 6 mm

Charging efficiency: ≥ 73 %

Color: Black



Packaging:

Product size: 55*82.5*8MM

Package size: 111.5*107*41.5MM

Product weight: 115g

Carton size: 46*44*22CM

QTY/Carton: 80pcs

G.W.: 10.5kg

Other customized wireless charger

Wireless Charger Humidifier

Model: MZ-WX01

Material: ABS+PCB board

Input: DC5V/2A; 9V/2A

Output: DC5V/ 1A; 9V/ 1.2A

Logo available

Double coil

Mobile phone output: 5W/7.5W/ 10W(max)

Transmission distance: ≤ 6 MM

Charging efficiency: $\geq 76\%$

Water capacity: 380ML

Spray time: 6 hours (Max)

Colour: White

Packaging:

Product size: 180*120.5*80MM

Package size: 190*130*90MM

Product weight: 420g

Carton size: 54*42*30CM

QTY/Carton: 24pcs

G.W.: 10.9kg



Other customized wireless charger



CUSTOM LOGO

Natural Rubber Mousepad with Wireless Charger Model: MZ-WP01

Material: PU+ Natural rubber+ Waterproof fabrics

Features:

- 1) 15 W wireless charger ,compatible with 10 W / 7.5 W/ 5 W
- 2) Waterproof function
- 3) Non-slip rubber base design
- 4) Tightly stitched edge
- 5) 100% made of natural rubber, the mouse pad has no odor

Input: DC 5V/2A, 9V/2A , 12V/ 1.5A

Port: Type C

Output: 5W/7.5W/ 10W/ 15W

Transmission distance: ≤ 6 mm

Charging efficiency: $\geq 73\%$

Color: Black or custom design

Packaging:

Product size: 800*300*4MM

Package size: 315*130*70MM

Product weight: 680g

Carton size: 55*35*36.5CM

QTY/Carton: 16pcs

G.W.: 13kg



PU Leather Folded Wireless Charger Mousepad

Model: MZ-WP11

Material: PU Leather

Input: DC5V/2A; 9V/2A

Output: DC5V/1A; 9V/1.2A

Light bright Logo

Mobile phone output: 5W/7.5W/10W/15W (max)

Transmission distance: ≤ 6 MM

Charging efficiency: $\geq 76\%$

Colour: Black or custom



Packaging:

Product size: 30*22MM

Package size: 283*110*25MM

Product weight: 289g

Carton size: 66*28*24CM

QTY/Carton: 50pcs

G.W.: 15kg

Other customized wireless charger

PU Leather Wireless Charger Notebook Model: MZ-NB01



Material: PU Leather

Input: DC5V/2A; 9V/2A

Output: DC5V/ 1A; 9V/ 1.2A

Light printing Logo

Mobile phone output: 5W/7.5W/ 10W/ 15W (max)

Transmission distance: ≤ 6 MM

Charging efficiency: $\geq 76\%$

Colour: Black, Grey, Blue or custom

Packaging:

Product size: 220*165*15MM

Package size: 265*184*23MM

Product weight: 420g

Carton size: 39*38*29CM

QTY/Carton: 30pcs

G.W.: 14.55kg

Other customized wireless charger

RGB large Mousepad with Wireless Charger Model: MZ-WP06



Color: Black

Material: Natural rubber + multispanDEX

Product size: 800*300*9mm

Product weight: 695g

Power: 10W, Compatible with 7.5W, 5W

Port: Micro port

Input: DC5V/2A; 9V/2A

Output: DC5V/1A; 9V/1.2A

Accessories: 1.5m black micro USB cable



Packaging:

Product size: 800*300*9MM

Package size: 315*130*70MM

Product weight: 680g

Carton size: 45*35*29CM

QTY/Carton: 10pcs

G.W.: 10kg

Other customized wireless charger



MZ-A001



MZ-H15



MZ-76



MZ-83



MZ-J864



MZ-J978

Other customized wireless charger



MZ-G605



MZ-HY011



MZ-SZ01



MZ-A06



MZ-N65



MZ-N61

Other customized wireless charger



MZ-T36



MZ-D5



MZ-N62



MZ-N51



MZ-J864

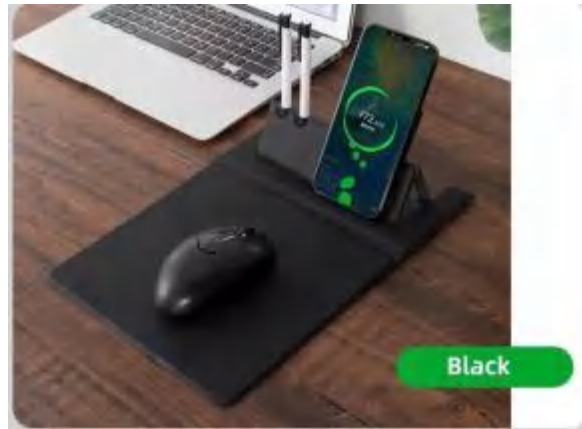


MZ-X263

Other customized wireless charger



MZ-WP12



MZ-WP13



MZ-WP14



MZ-N60



MZ-N38



MZ-N67

Other customized wireless charger



MZ-T12



MZ-T9



MZ-T7



MZ-T13



MZ-CH02



迈展科技

Focused Wireless Charging

More detail

 www.alitermz.com

Robin(Sales Director)

Shenzhen Maizhan Technology Co., Ltd.

Skype: 008617304458527

Tel: 86-0755-23247841

E-mail: robin@alitermz.com



END